



# EUROPEAN PRODUCT RANGE 2024



# READY TO CHANGE YOUR WORLD.

We are HD Hyundai Construction Equipment Europe and sell to more than 30 countries across Europe, through a network of over 140 dealers. Specialising in excavators, wheel loaders and articulated dump trucks, we are a division of the global brand that is synonymous with durability and reliability.

Supported by rigorous research and testing, quality and innovation are at the heart of everything we do. And as HD Hyundai Construction Equipment continues to invest heavily in innovative engineering and smart technology, our European customers will continue to benefit from world-class manufacturing with local expertise, into the future.



# CONTENTS

HX1000A L <b>NEW</b> .....	04	Wheel Loaders .....	16
HX800A L <b>NEW</b> .....	06	Wheeled Excavators .....	18
HL985A <b>NEW</b> .....	08	Articulated Dump Trucks .....	20
HX A-SERIES <b>NEW</b> .....	10	Compact Excavators .....	22
HRB SERIES <b>NEW</b> .....	12	Hydraulic Breakers .....	24
Crawler Excavators .....	14	Service and Backup .....	26

NEW

# HX1000A L

CRAWLER EXCAVATOR

**The 100-tonne HX1000A L is the biggest crawler excavator in our A-Series range.**

With a powerful, Stage V Perkins engine, the HX1000A L has a higher output than any other competitor in the market. With many state-of-the-art technologies, it also has high fuel efficiency and a low total cost of ownership. With proven components and a heavy-duty undercarriage, the HX1000A L is built to last. For better operator comfort, it has a larger cabin with good visibility and comes with a heated and ventilated premium seat as standard.

**A**  
SERIES





NEW

## HX800A L

CRAWLER EXCAVATOR

**Introducing the HX800A L, the new 80-tonne Stage V addition to our A-Series range of crawler excavators.**

With high engine power and the hydraulic flow produced, the HX800A L is best-in-class for power and productivity. With many state-of-the-art features including electronically controlled hydraulics, it is also very fuel efficient. With proven and durable components, a large cabin with excellent visibility and low total cost of ownership, the HX800A L is a great investment, while a wide catwalk on each side of the machine provides convenient daily maintenance.





NEW

# HL985A

WHEEL LOADER

**The new HL985A can load 7m<sup>3</sup> of material, making it suitable for working on larger job sites.**

With increased power (321kW /430hp), performance and durability, plus improvements in fuel consumption, ergonomics, machine uptime, safety features and HiMate with mobile communications, this heavyweight wheel loader does so much more than meet EU Stage V emission regulations. And for ultimate peace of mind, the HL985A has been built with premium components, has low service costs and comes with a 2 year/ 3000-hour warranty as standard.

**A**  
SERIES







NEW

## HX A-SERIES

COMPACT EXCAVATOR RANGE

**Introducing our new range of award-winning mini excavators.**

Available soon, these eight new A-Series machines are between 1.7 and 5.5-tonnes and feature a distinctive new design. Three models have already won the prestigious Red Dot Design Award. The 3.5-5.5-tonne models feature a tilting cab, while the over 4-tonne models have a new hydraulic system. All models can be configured with proportional joystick controls and quick-coupler piping.





NEW

## HRB SERIES

HYDRAULIC BREAKERS

**With 6 models to choose from, HD Hyundai Breakers provide a high energy, low maintenance breaker for maximum productivity.**

From Silenced Box Housing, to enable working in quiet urban zones, to a Through Bolt with best-in-class service life, our HRB Series breakers are packed with the latest innovative features, high performance technologies and the latest product design. For ultimate peace of mind, they also come with a 2-year manufacturer's warranty as standard. HRB Series breakers are designed for HD Hyundai machines but are also suitable for other manufacturers equipment.





# CRAWLER EXCAVATORS

Our new Stage V A-Series crawler excavators are ready to build your world. From 13 - 100-tonnes, with the most powerful engines in their class, they're all fully equipped for any big digging, lifting and loading application. All models feature a Long Carriage (LC) design and with spacious cabs, tough exteriors and advanced safety features, they can easily handle whatever the job site throws at you.



	HX130A LCR	HX140A L	HX145A LCR	HX160A L	HX180A L	HX210A L / NL	HX220A L	HX235A LCR
<b>Operating weight</b>	13445 kg	14405 kg	15430 kg	17695 kg	18665 kg	22150 / 22800 kg	22100 kg	24000 kg
<b>Max power</b>	55 kW (74 hp)	100 kW (134 hp)	100 kW (134 hp)	115 kW (155 hp)	115 kW (155 hp)	142 kW (190 hp)	145 kW (195 hp)	145 kW (195 hp)
<b>Bucket capacity</b>	0.50 m <sup>3</sup> - 0.61 m <sup>3</sup>	0.5 m <sup>3</sup> - 0.77 m <sup>3</sup>	0.50 m <sup>3</sup> - 0.77 m <sup>3</sup>	0.73 m <sup>3</sup> - 0.96 m <sup>3</sup>	0.73 m <sup>3</sup> - 0.96 m <sup>3</sup>	0.80 m <sup>3</sup> - 1.34 m <sup>3</sup>	0.80 m <sup>3</sup> - 1.34 m <sup>3</sup>	0.80 m <sup>3</sup> - 1.34 m <sup>3</sup>
<b>Breakout force</b>	97.1 kN	102.9 kN	102.9 kN	126.4 kN	126.4 kN	152.0 kN	152.0 kN	152.0 kN
<b>Max digging depth</b>	5640 mm	5830 mm	5940 mm	6530 mm	6530 mm	7610 mm	11760 mm	6490 mm

	HX260A L	HX300A L	HX330A L	HX380A L	HX480A L	HX520A L	HX800A L	HX1000A L
<b>Operating weight</b>	27000 kg	30730 kg	33750 kg	39100 kg	50690 kg	52048 kg	79500 kg	97000 kg
<b>Max power</b>	173 kW (232 hp)	210kW (282 hp)	242 kW (325 hp)	283 kW (380 hp)	300 kW (402 hp)	300 kW (402 hp)	402 kW (547 hp)	469 kW (629 hp)
<b>Bucket capacity</b>	0.80 m <sup>3</sup> - 1.34 m <sup>3</sup>	1.27 m <sup>3</sup> - 1.85 m <sup>3</sup>	1.44 m <sup>3</sup> - 2.10 m <sup>3</sup>	1.46 m <sup>3</sup> - 2.32 m <sup>3</sup>	1.38 m <sup>3</sup> - 3.2 m <sup>3</sup>	1.38 m <sup>3</sup> - 3.2 m <sup>3</sup>	4.64 - 5.24 m <sup>3</sup>	5.4 - 6.8 m <sup>3</sup>
<b>Breakout force</b>	178.5 kN	192.2 kN	217.7 kN	228.5 kN	247.1 kN	279.5 kN	279.5 kN	439.5 kN
<b>Max digging depth</b>	7550 mm	14740 mm	8210 mm	8220 mm	12020 mm	11870 mm	8480 mm	8795 mm

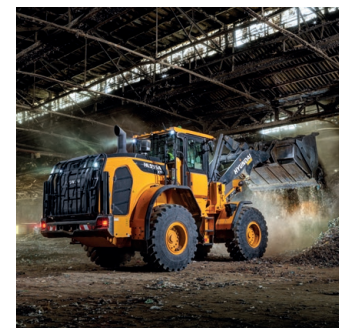
# WHEEL LOADERS

Hyundai HL A-Series wheel loaders are fully equipped to change your world, with unbeatable comfort, control, durability and easy maintenance for maximum uptime. With a range of 9 models covering 11 - 34-tonnes with 99 kW (133 HP) - 353 kW (473 HP) of power plus huge bucket capacities and breakout forces, you can count on them to be highly productive in all industrial, mining and quarrying applications.





	HL930A	HL940A	HL955A	HL960A	HL970A	HL975	HL975A CVT	HL980A	HL985A
<b>Operating weight</b>	11500 kg	13400 kg	15800 kg	19200 kg	24200 kg	26500 kg	26500 kg	30800 kg	33800 kg
<b>Max power</b>	99 kW (133 hp)	123 kW (165 hp)	157 kW (210 hp)	188 kW (251 hp)	264 kW (330 hp)	284 kW (381 hp)	284 kW (381 hp)	283 kW (380 hp)	353 kW (473 hp)
<b>Bucket capacity</b>	1.90 m <sup>3</sup>	2.30 m <sup>3</sup>	2.80 m <sup>3</sup>	3.30 m <sup>3</sup>	4.20 m <sup>3</sup>	4.80 m <sup>3</sup>	4.80 m <sup>3</sup>	5.60 m <sup>3</sup>	6.50 m <sup>3</sup>
<b>Tipping load (full turn)</b>	8000 kg	8600 kg	9850 kg	12410 kg	15850 kg	17300 kg	17200 kg	20100 kg	22950 kg
<b>Max hinge pin height</b>	3640 mm	3820 mm	3940 mm	4105 mm	4325 mm	4425 mm	4425 mm	4615 mm	4750 mm



# WHEELED EXCAVATORS

Aim for greater performance, versatility, comfort, control and safety with our seven new 6 - 23-tonne A-Series machines. Designed for the urban work environment across every application, they feature a new, compact rear design, improved cabin and enhanced controllability. Our A-Series machines comply with EU Stage V emissions regulations while delivering higher performance, better fuel efficiency and superior travel speed on the road.



	HW65A	HW100A	HW140A	HW150A CR	HW160A	HW170A CR	HW210A
<b>Operating weight</b>	6355 kg	10682 kg	15860 kg	17170 kg	18390 kg	18820 kg	22510 kg
<b>Max power</b>	49 kW (66 hp)	75 kW (100 hp)	129 kW (173 hp)	129 kW (173 hp)	129 kW (173 hp)	129 kW (173 hp)	145 kW (195 hp)
<b>Max travel speed</b>	32 km/h	38 km/h	37 km/h	35 km/h	37 km/h	35 km/h	38.4 km/h
<b>Breakout force</b>	42.1 kN	58.6 kN	102.9 kN	102.9 kN	114.8 kN	114.8 kN	141.2 kN
<b>Max digging depth</b>	3490 mm	4245 mm	5100 mm	5020 mm	5630 mm	5440 mm	5770 mm

Specs refer to 2-piece boom equipment on all machines except HW65A



# ARTICULATED DUMP TRUCKS

Introducing two new articulated dump trucks that perfectly complement our other A-Series machines. Based on a proven design with 50 years heritage, our 30 and 45-tonne machines have many industry-leading features that improve productivity across all mining, quarrying and heavy loading applications. With greater manoeuvrability, comfort and safety, these two newcomers are part of a range and reputation that just keeps growing.

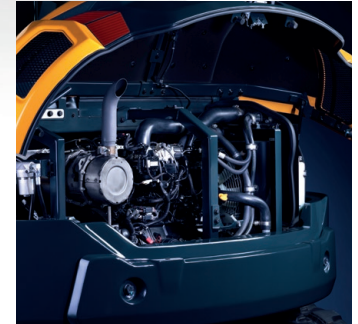


	HA30A	HA45A
Payload	28000 kg	41000 kg
Body volume (without / with tailgate)	16.8 m <sup>3</sup> / 17.8 m <sup>3</sup>	24.4 m <sup>3</sup> / 26.0 m <sup>3</sup>
Max power	276 kW (375 hp)	368 kW (500 hp)
Gross torque	1876 Nm	2476 Nm
Net weight	23200 kg	30100 kg



# COMPACT EXCAVATORS

For site preparation and general excavation projects, Hyundai have all the compact excavators you need. With a choice of 12 models from 1 - 9-tonnes, our minis offer exclusive features to help keep you productive and realise your projects with maximum uptime. With their small footprint, low cost and precise operation, Hyundai compact excavators are winning over contractors in a big way.



	HX10A	HX17A Z	HX19A	HX25A Z	HX30A Z	HX35A Z
Operating weight	1087 kg	1850 kg	2020 kg	2685 kg	2890 kg	3880 kg
Engine power	9.9 kW	11.9 kW	11.9 kW	18.5 kW	18.5 kW	17.8 kW
Bucket capacity	0.03 m <sup>3</sup>	0.04 m <sup>3</sup>	0.04 m <sup>3</sup>	0.06 m <sup>3</sup>	0.06 m <sup>3</sup>	0.09 m <sup>3</sup>
Breakout force	8.9 kN	16.3 kN	16.3 kN	20.0 kN	21.0 kN	32.0 kN
Max digging depth	1766 mm	2440 mm	2540 mm	2520 mm	2700 mm	2980 mm

	HX40A	HX48A Z	HX55A CR	HX65A	R80CR-9A	HX85A
Operating weight	4390 kg	5030 kg	5355 kg	6080 kg	8350 kg	8480 kg (mono) / 9250 kg (2pc)
Engine power	28.1 kW	28.1 kW	35.5 kW	48.8 kW	49 kW	49.9 kW
Bucket capacity	0.09 m <sup>3</sup>	0.13 m <sup>3</sup>	0.15 m <sup>3</sup>	0.18 m <sup>3</sup>	0.28 m <sup>3</sup>	0.28 m <sup>3</sup>
Breakout force	43.8 kN	37.4 kN	43.0 kN	42.1 kN	55.9 kN	61.7 kN
Max digging depth	3420 mm	3500 mm	3750 mm	3770 mm	4180 mm	4290 - 4640 mm

# HYDRAULIC BREAKERS

With 6 models and 10 variants to choose from HD Hyundai breakers are packed with the latest innovative features, efficient performance technologies and the latest product design to provide a high energy, low maintenance breaker for maximum productivity. They are designed for HD Hyundai machines but are also suitable for other manufacturers excavator equipment.

We have breakers suited to all types of machine weight as well as a range of chisel options specific to your application.

What's more, we recognise that breaker work is one of the most arduous applications on the jobsite, that's why we offer a 2-year manufacturer's warranty as standard.





	HRB030	HRB040	HRB050
Breaker weight	129 kg	180 kg	361 kg
Overall length	1331 mm	1417 mm	1660 mm
Oil flow	20 – 30 lpm	25 – 50 lpm	40 – 70 lpm
Operating pressure	88 – 117 bar	88 – 117 bar	108 – 137 bar
Impact rate	700 – 1200 mm	600 – 1100 mm	500 – 900 mm
Tool diameter	45 mm	53 mm	68 mm
Applied machine	1.2 – 3.0 ton	2.5 – 4.5 ton	4.0 – 7.0 ton

	HRB060	HRB140	HRB250
Breaker weight	451 kg	1007 kg	2046 kg
Overall length	1717 mm	2354 mm	2793 mm
Oil flow	50 – 90 lpm	80 – 110 lpm	120 – 180 lpm
Operating pressure	118 – 147 bar	147 – 166 bar	157 – 177 bar
Impact rate	400 – 800 mm	350 – 700 mm	350 – 550 mm
Tool diameter	75 mm	100 mm	140 mm
Applied machine	6.0 – 9.0 ton	10 – 15 ton	18 – 26 ton



## SERVICE AND BACKUP

**With a network of over 140 dealers across 30 European countries, Hyundai's service and backup is second to none.**

From buying your machine with quick and easy financing and insurance, to extended protection products that will protect your Hyundai machine for life. Our service engineers offer the best repair & maintenance service by attending the Hyundai Academy to keep their knowledge up to date.

Our European Parts Distribution Centre is located in Belgium to offer immediate support for dealers and customers, from

receiving orders to picking, packing and shipment. The warehouse houses over 125,000 items and has over 12,000 m<sup>2</sup> in storage space. When it comes to optimising machine uptime, Hi-MATE, our telematics remote management system gives you access to vital service and diagnostic information anywhere in the world.

If you're looking to finance construction equipment, you can count on Hyundai Finance to provide the best solution.

We offer quick and easy financing, with customised payment plans to suit everyone.



## HYUNDAI WARRANTIES

**HD Hyundai Construction Equipment offers one of the strongest warranty programmes in the industry, providing you not only with peace of mind but also an added value to your product.**

**Standard Warranties:** Your new machine comes with a 2-year, 3000 hour standard warranty. This protects you from repair costs and offers added value when trading your machine in.

**Extended Warranties:** For added protection we offer a variety of Extended Warranty Packages to suit your machine and financial preferences. Our programme allows you to cover your machine up

to a total of 5 years or 10,000 operating hours with the choice of covering the full machine or only the main components.

**Used Equipment Warranty:** Our Hyundai Used Machine Warranty programme protects your used machine from sudden or unforeseen breakdowns that occur out of the initial factory warranty period. We have tailored the programme to your needs with 2 levels of cover: Power covers components such as engine, transmission and hydrostatic pump and Plus, which covers hydraulic pumps, valves and cylinders.



Specifications and design are subject to change without notice. Pictures of HD Hyundai Construction Equipment Europe products may show other than standard equipment.

HD Hyundai Construction Equipment Europe nv, Hyundallaan 4, 3980 Tessenderlo, Belgium.  
Tel: +32 14 56 22 00 Fax: +32 14 59 34 05

Contact your HD Hyundai dealer.  
[hyundai-ce.eu/en/dealer-locator](https://hyundai-ce.eu/en/dealer-locator)



HY-CE-000496. 06/2024. EN. ISSUE 6

 **HD HYUNDAI**